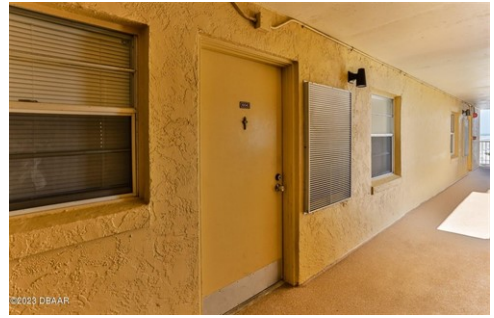




\$ 535,000



3501 S Atlantic Ave # 6040, New Smyrna Beach, FL 32169

- » Beds: 2 | Baths: 2 Full
- » MLS #: 06102965
- » Condominium | 1,060 ft² | Lot: 79,715 ft² (1.83 acres)
- » More Info: [3501SAtlanticAveUnit6040.IsForSale.com](https://www.3501SAtlanticAveUnit6040.IsForSale.com)



Donna Concannon
 NSB Luxury & Lifestyle Group
 (386) 235-8588 (Donna)
 (386) 453-6017 (David)
 Donna@NSBHOMES.COM
<https://www.nsbhomes.com/staff/donna-concannon>



NEVER-ENDING VIEWS OF THE SPECTACULAR ATLANTIC OCEAN... Opportunity Awaits You in this Direct Oceanfront Ponce de Leon Towers Condo. No time to waste before this one is gone! Everything you need is included in this Fully Furnished two bedroom two bathroom condo, with Fresh Paint and New Laminate Flooring throughout. The spacious Primary Bedroom is appointed with a tastefully updated bathroom and walk in closet. The Kitchen/Living/Dining combo offers an Open Floor Plan for entertaining your guests and family alike while sipping wine and enjoying the beach views. This unit would make a lovely permanent home as it is spacious enough for full-time living or for a second home, and the rental potential is amazing. Ponce de Leon's amenities include a heated pool, library and gaming room, and reserved parking. While situated on the pristine sugar sands of New Smyrna Beach. Walk, bike or golf cart ride to local restaurants, farmers' markets, business district, art scene and Flagler Avenue boutique shops, eateries and nightlife...not to mention boating and water sports. New Smyrna Beach offers it all. Be sure to check out our virtual tour of this beautiful condo. All information contained herein deemed to be accurate but to be verified by purchaser.

